

1. Organizing the LEDS Process

Institutional LEDS Structure, LEDS Work Plan. Stakeholder

- 1.0. Organizing the LEDS Process
- 1.1. Institutional Structure for LEDS
- 1.2. Workplan to Develop the LEDS
- 1.3. Roles and responsibilities to develop LEDS

2. Assessing the Current Situation

Alignment with Development Goals, Collecting Data, GHG

- 2.1. Assess current country plans, policies, practices, and capacities
- 2.2. Compile lessons learned and good practices from ongoing and previous sustainable development efforts...
- 2.3. Assess public and private sector capacity to support initiatives
- 2.4. Assess and improve the national GHG inventory and other economic and resource data as needed for LED...

Greenhouse Gas Inventor...

3. Analyzing Options

Developing BAU, Analyzing Low

- 3a. Analytical Decision Making - Developing BAU Scenario
- 3b. Analytical Decision Making - Assessing Opportunities
 - 3b.1. Assess technical potential for sector technologies
 - Renewable Energy Technical Potential Toolkit
 - Building Energy Assessment Toolkit
 - Power System Screening and Design Toolkit
 - Land Use Assessment Toolkit
 - Bioenergy Assessment Toolkit
 - Transportation Assessment Toolkit
 - 3b.2. Assess economic and market potential of technologies and initiatives
 - Clean Energy Market Analysis Toolkit
 - 3b.3. Prioritize development options
- 3c. Analytical Decision Making - Developing and Assessing Low Emissions Development Scenarios
 - 3c.1. Develop low emissions growth scenarios
 - 3c.2. Assess institutional framework for LEDS

4. Prioritizing and Developing

Prioritizing Actions, Developing Implementation and Financing

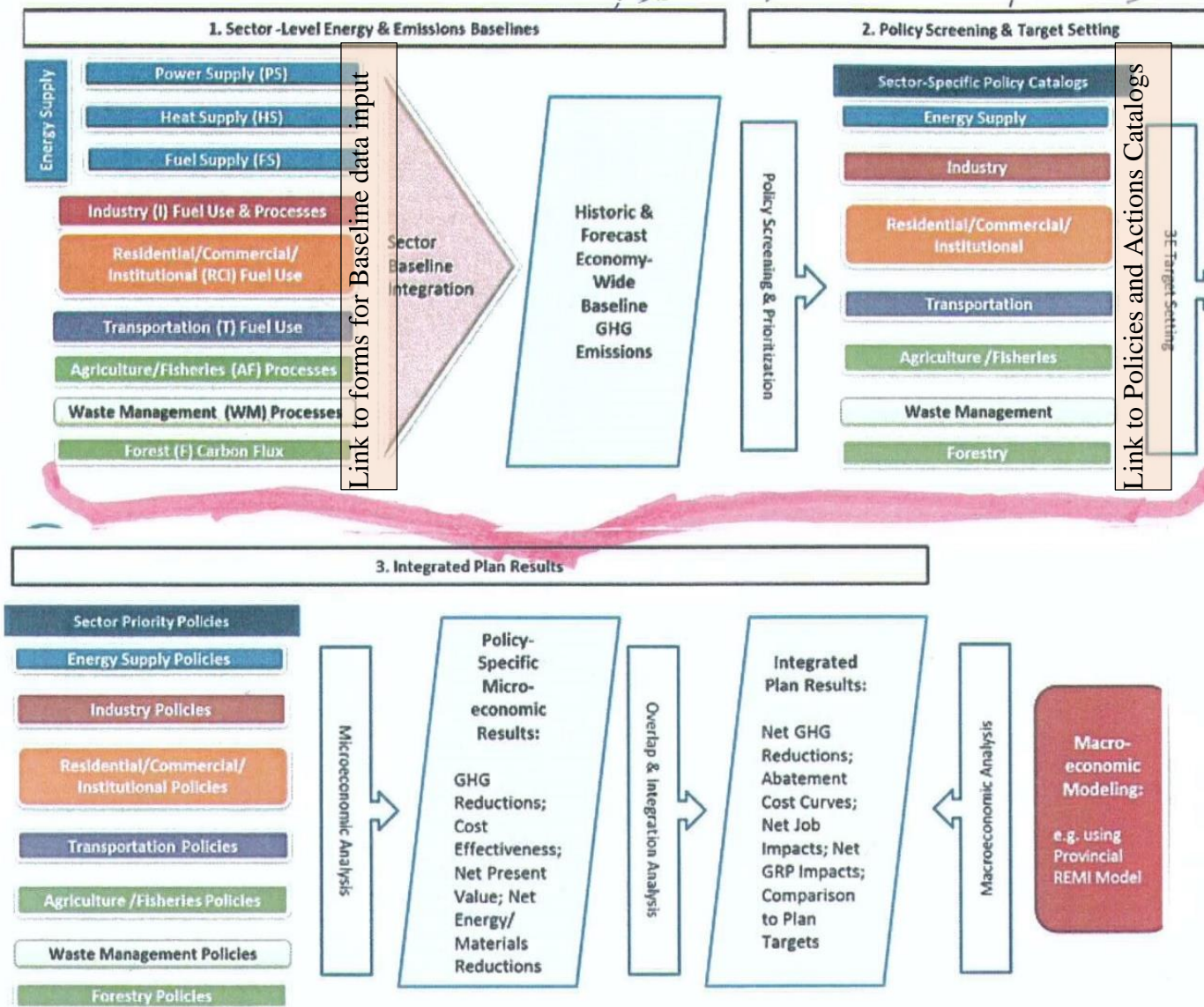
- 4.1. Preparations for Implementation
- 4.2. Prepare comprehensive implementation plan
- 4.3. Launch implementation

5. Implementing and Monitoring

Securing Finance, Implementing Actions and Policies, Designing

- 5.1. Begin execution and monitor progress of implementation plans

Low Emissions Development (LEDS) Analysis System Components



[Page](#) [View Source](#) [History](#)

- ⇒ [Search](#)
- ⇒ [View](#)
 - [New pages](#)
 - [Recent changes](#)
 - [Watch/unwatch page](#)
 - [Featured articles](#)
 - [Special service pages \(as example see attachment “Special pages.pdf”\)](#)
- ⇒ [Open WiKi Statistics](#)
- ⇒ [Site map](#)

Selector “Tag”:

Sectors/Time/Region/Author/Project/LEDS Phase/History/Tools

Selector “Sector”:



Search

[Page](#) [View Source](#) [History](#)[⇒ Find data](#)
[⇒ Add data](#)**Select Tag:** Sectors/Time/Region/Author/Project/LEDS Phase/History

Map data © OpenStreetMap contributors
Tiles by MapQuest

☿ Sectors

[Geothermal \(251\)](#)[Solar \(184\)](#)[Wind \(165\)](#)[Water \(67\)](#)[Biomass \(66\)](#)[Utilities \(58\)](#)[Buildings \(54\)](#)[Hydrogen \(36\)](#)[Smart Grid \(27\)](#)[+ Add Dataset](#)**1,064 datasets found**Order by:

State Energy Efficient Appliance Rebate Program (SEEARP) reports database

The State Energy Efficient Appliance Rebate Program (SEEARP) reports database includes rebate reports (xls) and summary factsheets (pdf) from states and territories that...

[ZIP](#)

Grande Prairie Wind Purpose and Need Example

This is an example of how a purpose and need statement is put together for the Grande Prairie Wind Project.

[PDF](#)

CHP Units in Washington State

This is data taken from the website <http://www.eea-inc.com/chpdata/States/WA.html> on 2/3/2015 regarding the Cogeneration units in Washington State. The first book in the Excel...

[xlsx](#)

Geothermal Exploration of Newberry Volcano, Oregon Summary Report With Append...

Final Report for the DOE Innovative Exploration Technology (IET) Grant 109 program supporting geothermal

[Page](#) [View Source](#) [History](#)

- ⇒ Stakeholders
- ⇒ My box
 - Profile
 - Groups membership
 - Watchlist
 - Subscriptions
- ⇒ My content
- ⇒ Groups/Discussions
- ⇒ Members
- ⇒ Q&A
- ⇒ Event/Notices
- ⇒ Subscribe to news
- ⇒ Blogs/Add link to blogs

Latest featured content

Most active groups

Selections: Popular themes/ Featured Datasets/ Featured articles/Tags

Select Tag:

Sectors/Time/Region/Author/Project/LEDS Phase/History



buildings



geothermal



hydrogen



smart grid



solar



utilities



water

Selector:



Energy Apps Catalog

Find apps: 166 for the web

36 for your mobile device

83 for your desktop

Search

271 Energy Apps

Catalog of App.....

Special pages

Maintenance reports

- [Broken redirects](#)
- [Dead-end pages](#)
- [Double redirects](#)
- [Orphaned pages](#)
- [Uncategorized files](#)
- [Uncategorized pages](#)
- [Uncategorized templates](#)
- [Unused categories](#)
- [Unused files](#)
- [Unused properties](#)
- [Unused templates](#)
- [Wanted categories](#)
- [Wanted files](#)
- [Wanted pages](#)
- [Wanted properties](#)
- [Wanted templates](#)

Lists of pages

- [All pages](#)
- [All pages with prefix](#)
- [Approved revisions](#)
- [Categories](#)
- [Category tree](#)
- [Forms](#)
- [List of redirects](#)
- [Pages linking to disambiguation pages](#)
- [Properties](#)
- [Templates](#)
- [Types](#)

Login / create account

- [Log in / create account](#)

Users and rights

- [Active users list](#)
- [Blocked users](#)
- [Change e-mail address](#)
- [Preferences](#)
- [Reset password](#)
- [User contributions](#)
- [User group rights](#)
- [User list](#)

Recent changes and logs

- [Gallery of new files](#)
- [Logs](#)
- [My watchlist](#)
- [New pages](#)
- [Recent changes](#)
- [Related changes](#)
- [Valid change tags](#)

Media reports and uploads

- [File list](#)
- [File path](#)
- [MIME search](#)
- [Search for duplicate files](#)
- [Upload file](#)

High use pages

- [Most linked-to categories](#)
- [Most linked-to files](#)
- [Most linked-to pages](#)
- [Most linked-to templates](#)
- [Pages with the most categories](#)
- [Pages with the most interwikis](#)
- [Pages with the most revisions](#)

Page tools

- [Compare pages](#)
- [Export pages](#)
- [Get data](#)
- [What links here](#)

Semantic Forms

- [Create a category](#)
- [Create a class](#)
- [Create a form](#)
- [Create a property](#)
- [Create a template](#)
- [Edit with form](#)
- [Run query](#)
- [Start of form](#)